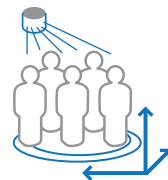


SAIMOS[®] LiDAR & Radar



◆ milestone | XProtect[®]

SAIMOS[®] offers the first deep and seamless integration of **LiDAR (Light Detection and Ranging)** and **Radar** into **Milestone XProtect[®]**.

SAIMOS[®] enables **advanced analytics** based on LiDAR, which can be utilised as a multi-purpose sensor, complementing 2D cameras but potentially reducing their number. In addition, LiDAR does **NOT require external illumination**. The alarm-/event communication with Milestone XProtect[®] is handled by SAIMOS[®].

BASIC integration

Zones are defined within the perception software providing the following functionalities:

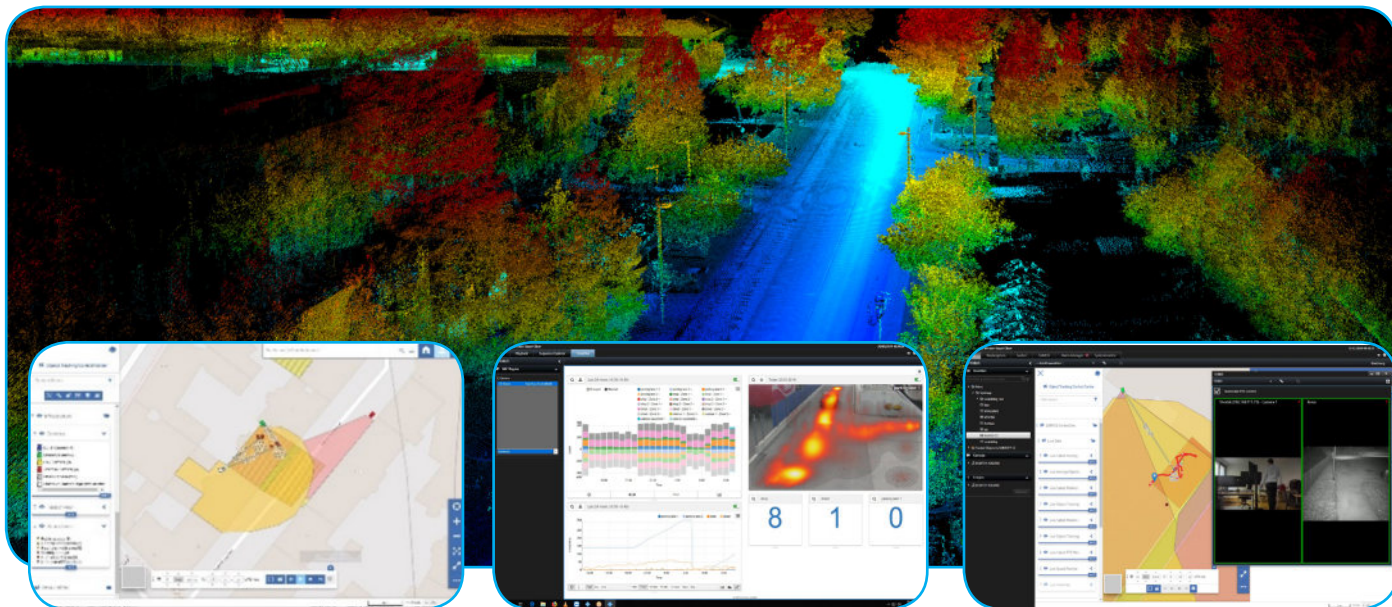
- Perimeter / Intrusion detection
- Counting & Occupancy
- Proximity detection

ADVANCED integration with the SAIMOS[®] Control Center (full fledge GIS)

Zones are drawn within the map view providing the following functionalities:

- Real-time Object movement display on a map
- Perimeter / Intrusion detection
- Arming and disarming of alarm zones via the map UI
- Counting / Occupancy / Heatmapping / Statistics
- Proximity detection
- Cross camera object tracking & PTZ camera control
- Recording, review and analytics of historical data
- Full-fledged GIS integration with Milestone XProtect[®]

Please contact us for further details: contact@saimos.eu ■ www.saimos.eu



Use Cases

Transportation	<ul style="list-style-type: none"> ■ Perimeter protection (indoor & outdoor) ■ Secure and protect restricted areas, stations, assets, etc. ■ Alarms on non-authorized use of reserved lanes and illegal parking ■ Protect rails/tracks from intrusion and theft in non-operation hours ■ Passenger tracking from curb to gate ■ Passenger flow management in combination with digital signage ■ People Counting / Occupancy / Heatmap / Density statistics ■ Queue Management ■ Proximity detection ■ Cross camera object tracking / PTZ-Camera control ■ Traffic monitoring / Speed detection <p><i>The above is complemented by further use-cases for Smart Buildings (see below)</i></p>
Critical Infrastructure	<ul style="list-style-type: none"> ■ Perimeter protection for assets / construction sites ■ Visualize assets / construction areas on a map ■ Secure access to critical areas ■ Protect distribution networks / unmanned stations ■ People Counting / Occupancy / Heatmap / Density statistics ■ Support emergency evacuation scenarios <p><i>The above is complemented by further use-cases for Smart Buildings (see below)</i></p>
Smart / Safe City	<ul style="list-style-type: none"> ■ Monitor Cities more efficiently with geographic situational awareness ■ Monitor traffic (vehicles/humans) flow for BI and optimization ■ Identify false direction violations ■ Detect red light violations ■ Speed detection ■ Monitor the length of vehicle queuing in front of a red light ■ Monitor the vicinity of people towards the road on a red light ■ Gather business Intelligence without collecting PII ■ Utilize traffic data as input for ITS <p><i>The above is complemented by further use-cases for Smart Buildings (see below)</i></p>
Smart Buildings	<ul style="list-style-type: none"> ■ Perimeter protection of entries, greens, air-intakes, etc. ■ Secure stair-cases from unwanted usage/intrusion ■ Save energy by controlling lighting or AC as per current occupancy ■ Identify blocked Emergency exits / service corridors ■ Identify long term loitering or fast objects in certain areas ■ Support evacuation scenarios by knowing real-time occupancies ■ Identify false direction violations ■ Integration with Digital Signage ■ Gather business Intelligence without collecting PII ■ Optimize manpower due to automated alarm notifications ■ Increase operational quality due to minimum false alarm rates ■ Time saving event filtering during incident investigations