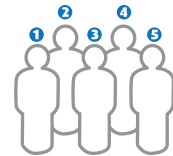


C3 Core Count for

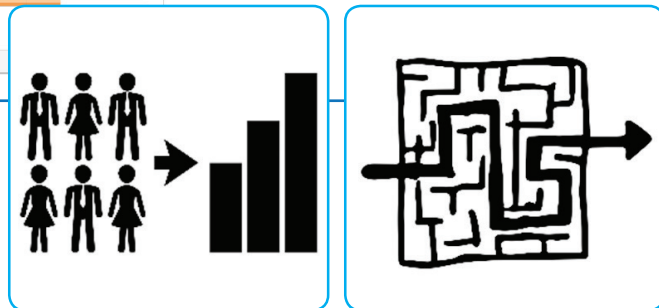
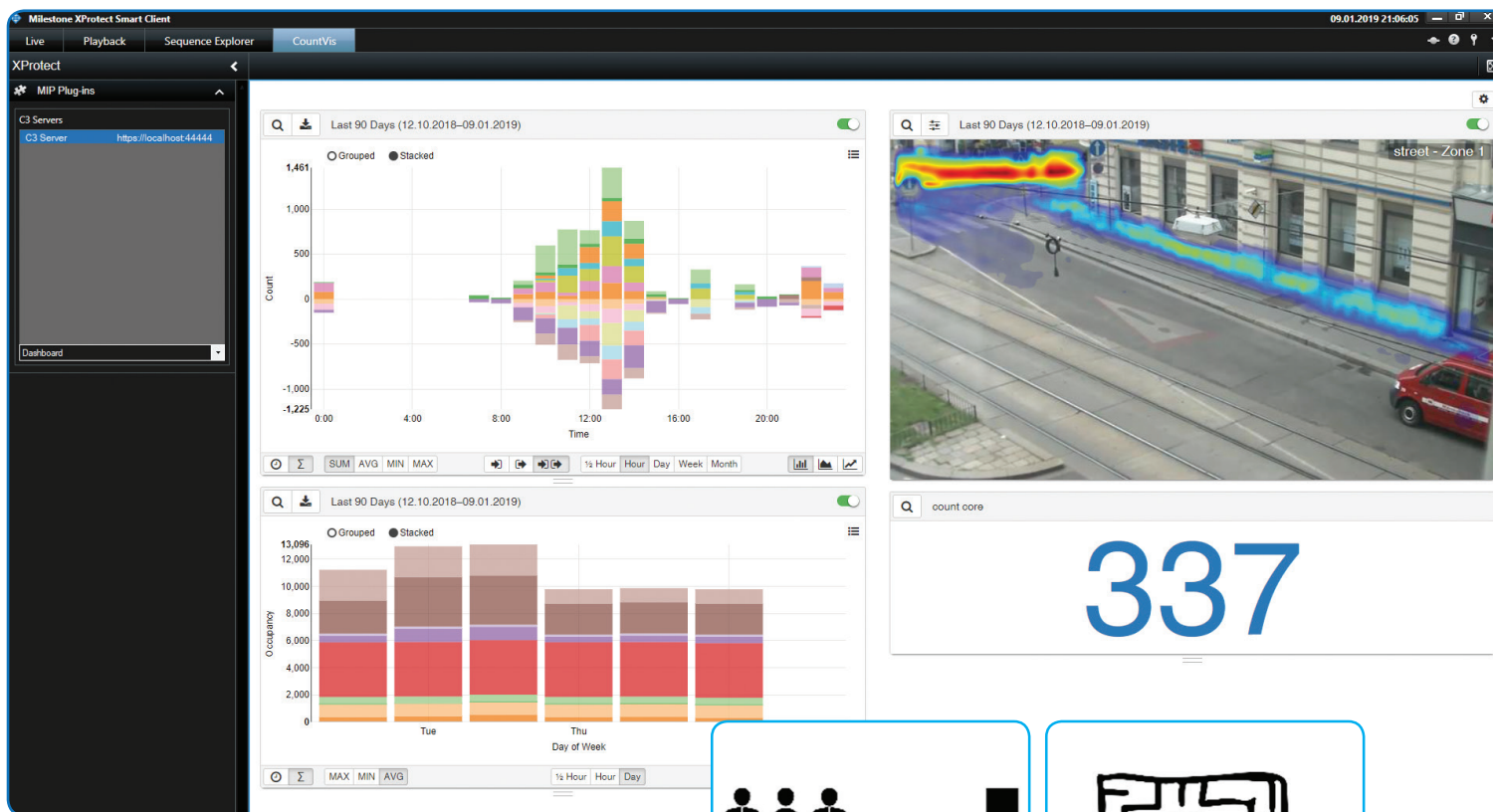
milestone | XProtect®



SAIMOS® C3 Core Count is based on reliable and robust object counting and contains extensive statistical analysis, visualization and reports. This powerful package offers easy to configure real-time analysis in a modern design. Sample use cases are counting, heat-mapping and occupancy monitoring considering multiple cameras.

The system is fully integrated into Milestone XProtect® Essential+ or higher via Plug-In and can be configured directly within the Milestone XProtect® Management Client.

Discover the C3 experience and consult our team to optimize your use case: contact@saimos.eu



Use Cases

Shop Optimization	<ul style="list-style-type: none">■ Customer flow analysis: Where and when do how many people move?■ Optimization of product assortments■ The right number of employees at the right time
Center Management	<ul style="list-style-type: none">■ Detailed analysis of visitor frequency■ Quantification of the number of visitors in the shops■ Frequency-dependent facility management
Event Management	<ul style="list-style-type: none">■ Analysis of the area capacity■ Occupancy monitoring

Key Features

Algorithms & Functions	<p>Frequency analysis:</p> <ul style="list-style-type: none">■ Counts persons or objects entering or leaving an area■ Each channel can contain any number of counting zones.■ Full flexibility through elegant area system■ Modern and flexible statistics with a wide range of filter options <p>Occupancy analysis:</p> <ul style="list-style-type: none">■ Combines one or more counting areas into one occupancy monitor■ Sends alerts for customizable occupancy scenarios■ Provides occupancy statistics for analysis and planning <p>Heatmap:</p> <ul style="list-style-type: none">■ Shows which areas are more or less frequented■ Adjustable visualization and different color schemes■ Can be filtered by time range <p>Dashboard:</p> <ul style="list-style-type: none">■ Summary of all evaluation modules in a customizable overview <p>Reports:</p> <ul style="list-style-type: none">■ Automatically email reports to any number of recipients or automatically save them to a physical data source
Data Interfaces	RESTful Modbus IP
Milestone Integration	Milestone XProtect® Essential+ or higher
Technical Requirements	Minimal pixel density: 12 pixel / meter Windows / Linux RAM: min. 4 GB HDD: min. 5 GB CPU: Intel i5/AMD/ARMv8