

# Core Perimeter for

## milestone | XProtect®

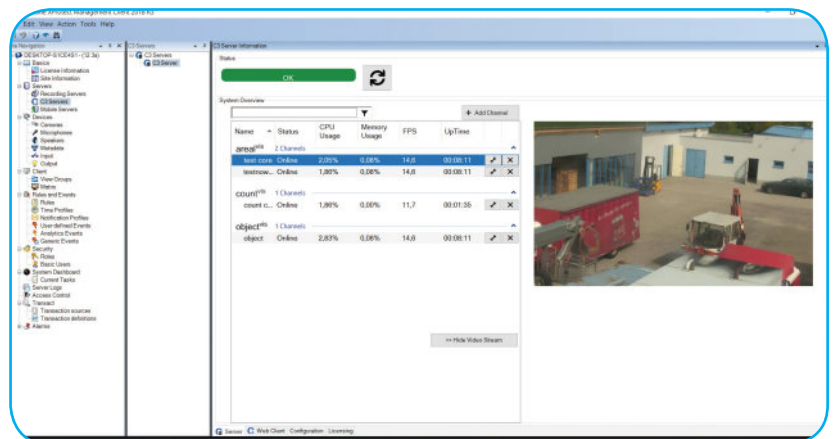


SAIMOS® C3 Core Perimeter for Milestone XProtect® effectively and reliably protects indoor and outdoor areas against unwanted intrusion. The flexible rule system offers many possibilities to implement area monitoring efficiently for 2 zones and can be upgraded to advanced functionality.

Modern detection based on artificial intelligence ensures weather-independent 24 x 7 operation with standard IP, infrared, thermal imaging or embedded cameras.

The system is fully integrated into Milestone XProtect® Essential+ or higher via Plug-In and can be configured directly within the Milestone XProtect® Management Client. The simple scene calibration and rule definition allows an initial configuration within just a few minutes.

Discover the C3 experience and consult our team to optimize your use case: [contact@saimos.eu](mailto:contact@saimos.eu)



## Use Cases

<b>Area Security</b>	Securing outdoor areas by combining several rule sets <ul style="list-style-type: none"><li>■ Detection of loitering and running persons for critical areas</li><li>■ Ensures that access to critical areas is not violated during certain hours</li></ul>
<b>Perimeter Security</b>	Protects the perimeter from unwanted intruders <ul style="list-style-type: none"><li>■ Sending alerts to a control center in case of an alarm</li><li>■ Definition of rules with direction restriction</li><li>■ Definition of pre-alarms for early detection of intruders</li></ul>
<b>Indoor Security</b>	Creating complex scenarios for indoor systems <ul style="list-style-type: none"><li>■ Connect third party alarms such as access control and fire safety</li><li>■ Control of the on/off state of channels with building security systems</li></ul>

## Key Features

<b>Algorithms</b>	Intrusion Loitering Direction Maximum allowed speed
<b>Configuration</b>	Automatic camera detection Two individually configurable alarm zones Easy scene calibration based on body sizes directly in the live video view Intelligent system for minimized false alarm rates Optimized for 24/7 real-time operation
<b>Milestone Integration</b>	Milestone XProtect® Essential+ or higher
<b>Technical Requirements</b>	<b>Minimal pixel density: 12 pixel / meter</b> Windows / Linux   RAM: min. 4 GB   HDD: min. 5 GB   CPU: Intel i5/AMD/ARMv8